

Marathon everRun[®] VM World's First Fault-Tolerant, High Availability Software for Server Virtualization

Prevent outages and data loss in your Citrix virtual infrastructure

VIRTUALIZATION'S UNINTENDED CONSEQUENCES

Server virtualization brings many benefits including better server utilization, lower capital and operating expenses, and greater flexibility to meet business needs. But virtualization also brings new challenges, including an increased need for rock-solid availability. Why? Because server consolidation results in the server becoming the single point of failure for multiple applications. It's the 'all your eggs in one basket' scenario.

VIRTUALIZATION REQUIRES SOMETHING BETTER

Most availability offerings for virtual machines are bolt-on clustering & replication products traditionally used on physical servers that put the burden of availability on you – the IT professional. But now you have a better option.

NEXT GENERATION AVAILABILITY

Marathon has partnered with Citrix[®], provider of XenServer, the dynamic virtualization software platform based on the Xen hypervisor. The integration of Marathon everRun[®] and Citrix XenServer[™] Enterprise Edition leap-frogs today's high availability offerings for server virtualization.

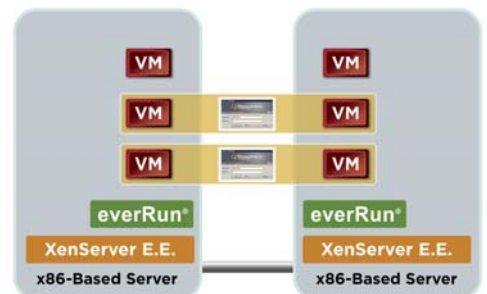
RUN BUSINESS CRITICAL APPLICATIONS – AND MORE – IN VIRTUAL MACHINES

everRun VM delivers reliable protection for critical virtual workloads by providing redundant virtual machines and synchronized mirroring of the entire

system – network, applications and data. No application downtime. No data loss.

everRun VM is unique. It protects at the individual VM level, but runs below the VM, just above the hypervisor. This level of integration allows everRun to build redundancy that is completely transparent to the operating environment to seamlessly manage failures while the application continues to execute. We call it ComputeThru[®] technology.

The integration of Citrix XenServer's superior "bare-metal" performance and everRun VM's unique software fault-tolerant architecture gives you the confidence to run business critical and other high-value applications in virtual machines - so you can gain the benefits of server virtualization across a much broader range of applications.



WORLDWIDE HEADQUARTERS

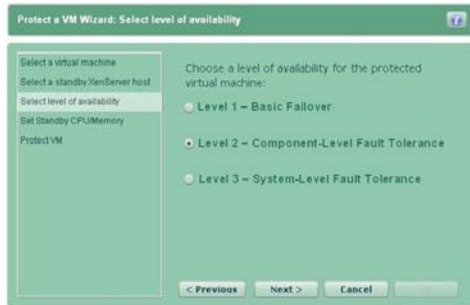
Marathon Technologies Corporation
 295 Foster Street, Littleton, MA 01460
 Tel 1.800.884.6425 / 1.978.489.1100
 Fax 1.978.489.1101
 Email: info@marathontechnologies.com
 Web: www.marathontechnologies.com

EMEA HEADQUARTERS

Marathon Technologies UK Ltd
 Regus House, Trinity Court
 Wokingham Road, Bracknell
 Berkshire, RG42 1PL
 Tel +44 (0) 1344.706.241
 Fax +44 (0) 1344.706.242
 Email: emea@marathontechnologies.com
 Web: www.marathontechnologies.com

PAY ONLY FOR THE PROTECTION YOU NEED

everRun VM lets you select the right protection level for each application running in virtual machines. By matching the right availability for each application, you only pay for the availability protection you need.



AUTOMATE VIRTUAL MACHINE AVAILABILITY

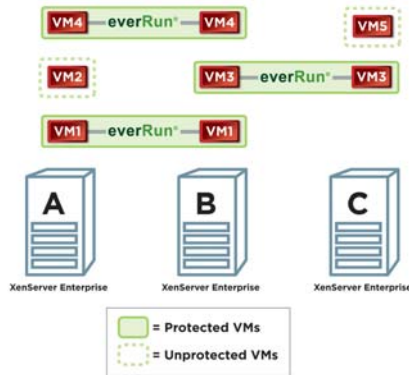
everRun VM completely automates VM availability. Automated setup and configuration eliminates the manual configuration other availability software require. Point to the VM you want to protect, and everRun's setup wizard does the rest. You can fully deploy everRun VM in 30 minutes or less.

everRun VM's embedded policy management automatically handles all system, network and disk I/O failures. Failures are automatically and immediately addressed - without IT intervention.

By automating VM availability everRun VM removes the availability burden that traditional "bolt-on" failover and data replication software require. And for the first time, midsize businesses can get practical, automated HA and DR.

PROTECT ANY WINDOWS APPLICATION

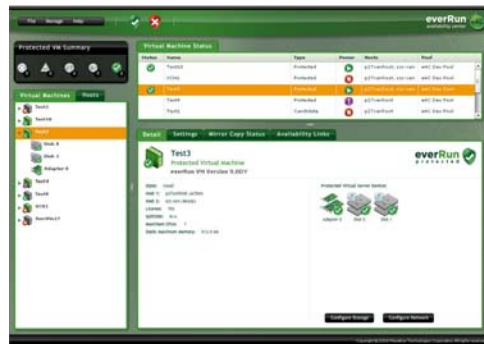
everRun VM is application independent – it works with any Windows Server application. No cluster awareness needed. No customization required.



SIMPLIFY AVAILABILITY MANAGEMENT

everRun VM treats redundant virtual machines as one, so you only need to manage one environment for each application, not two separate environments that other high availability offerings require.

Managing this environment is centralized through the everRun Availability Center, a web-based management interface that provides a consolidated view of your entire everRun VM environment. As your needs grow, simply point and click to add additional servers to the pool to support additional applications and higher performance.



GET GEOGRAPHIC FAULT TOLERANCE BETWEEN DATA CENTERS

everRun VM includes SplitSite[®] which goes beyond local server-level protection by enabling fault tolerance between geographically dispersed locations. With SplitSite you can ensure that you still meet compliance and production requirements even if your primary data center is hit with a disaster.

Geographic fault tolerance is a necessity to ensure continuity of operations during most any outage - and everRun is the only solution to offer it.

everRun VM

Achieve:

- Uninterrupted availability
- 100% data protection
- Rapid recover
- All through 'one-click' operation