

# Marathon everRun<sup>®</sup> CDP

## Real-Time Data Protection- Fast Data Recovery

### Continuous local backup eliminates data loss and allows consistent, point-in-time recovery

#### UNMATCHED DATA AVAILABILITY

Data is recoverable to any point in time or bookmarked event.

#### ELIMINATES DATA LOSS

Continuous replication eliminates the risk of data loss that can occur between traditional backups or snapshots.

#### ROBUST ARCHITECTURE

Offloaded host processing and streamlined data replication based on block-level differences and real time data changes provide unmatched scalability and performance.

#### STORAGE INDEPENDENCE

Supports replication between heterogeneous storage devices and storage networks for maximum flexibility.

#### CENTRALIZED MANAGEMENT AND REPORTING

Web-based management interface accessible from anywhere provides centralized management and control.

#### CONTINUOUS DATA PROTECTION ELIMINATES BACKUP WINDOWS AND REMOVES THE RISK OF DATA LOSS

Marathon's everRun CDP is a robust and flexible continuous data protection solution providing real time data backup and the ability to recover to a specific point in time or bookmarked event.

The majority of data loss issues are operational and result from user error, logical application errors, or database corruption. The ability to recover lost data is highly dependent on the backup and recovery infrastructure in place. It is widely recognized that over 90% of data loss and data recovery requests occur within the first twenty-four hours, and traditional backup typically occurs on a daily basis capturing only the changes since the last backup. This approach is unacceptable for most organizations and leaves critical data and applications unprotected between backups.

Organizations can feel confident utilizing everRun CDP for their entire backup and recovery solution or can utilize everRun CDP as an adjunct to their existing backup application. everRun CDP works well in traditional backup environments by allowing organizations to offload the production environment and create an out-of-band backup environment where the backup server is using the continuously updated data replica as the source for all backups. This results in the optimal mix of recovery point and recovery time objectives.

everRun CDP can be combined with everRun DR to provide long distance disaster recovery along with local data protection. See the everRun DR datasheet for details.

Marathon has raised the bar in enabling not just point in time restoration but also event-based restorations. everRun CDP allows organizations to tag "event" bookmarks and use them for fast recovery. Unlike other vendors who simply time-stamp each block to enable restoration to a given point of time, everRun CDP actually understands the application

state allowing for application consistent restorations. This critical difference allows organizations to restore back to a given event or a given point in time and be assured that the application will come up correctly.

**everRun CDP IN ACTION - HOW IT WORKS**

everRun CDP is designed for efficient, highly-scalable data protection in the most demanding environments. everRun CDP agents reside on the host application servers and/or database servers and enable volume-level continuous data protection and scheduled file-level protection respectively. Each lightweight agent installs seamlessly and occupies a very small footprint on the host. The agents streamline the data replication process by only moving block-level differences based on real time data changes. Furthermore, unlike many storage vendor approaches, everRun CDP works in virtually any heterogeneous storage environment resulting in dramatic cost savings.

everRun CX is the Control Server that provides centralized management and host offload of CPU-intensive operations necessary for efficient data protection. It also includes the everRun Analyzer to help IT staff accurately analyze and provision secondary storage and bandwidth. The diagram below depicts a typical everRun CDP deployment. everRun CDP provides continuous local backup and rapid operational restore capabilities at the local level, protecting against logical errors and data corruption.

everRun Analyzer enables trending capabilities including the ability to graphically display collected

data including data change amounts, effective compression ratios and bandwidth usage on a daily, monthly or yearly basis by individual volume or cumulatively for all replicated volumes. Analysis capabilities can compute bandwidth requirements for a specified recovery point objective for a single or group of replication pairs.

everRun CDP is compatible with industry-leading virtualization solutions. Data replication and recovery can operate between two virtual machines, or between virtual and physical machines giving users total configuration flexibility.

**ADDITIONAL everRun CDP HIGHLIGHTS**

Support for Virtual Servers - everRun CDP can protect virtual server environments as well as replicate data to target virtual server environments enabling cost effective server consolidation.

Comprehensive management tools include reporting and profiling with "if/then" capabilities.

Patented point-in-time bookmarking technology for improved Recovery Point and Recovery Time Objectives.

**THE BOTTOM LINE**

The everRun CDP product suite brings business continuity to a whole new level. Organizations can feel confident that their core business data will have unparalleled protection with the industry leading CDP solution. When it comes to data protection, everRun CDP offers a robust, flexible and cost-effective solution that is easy to configure and manage.

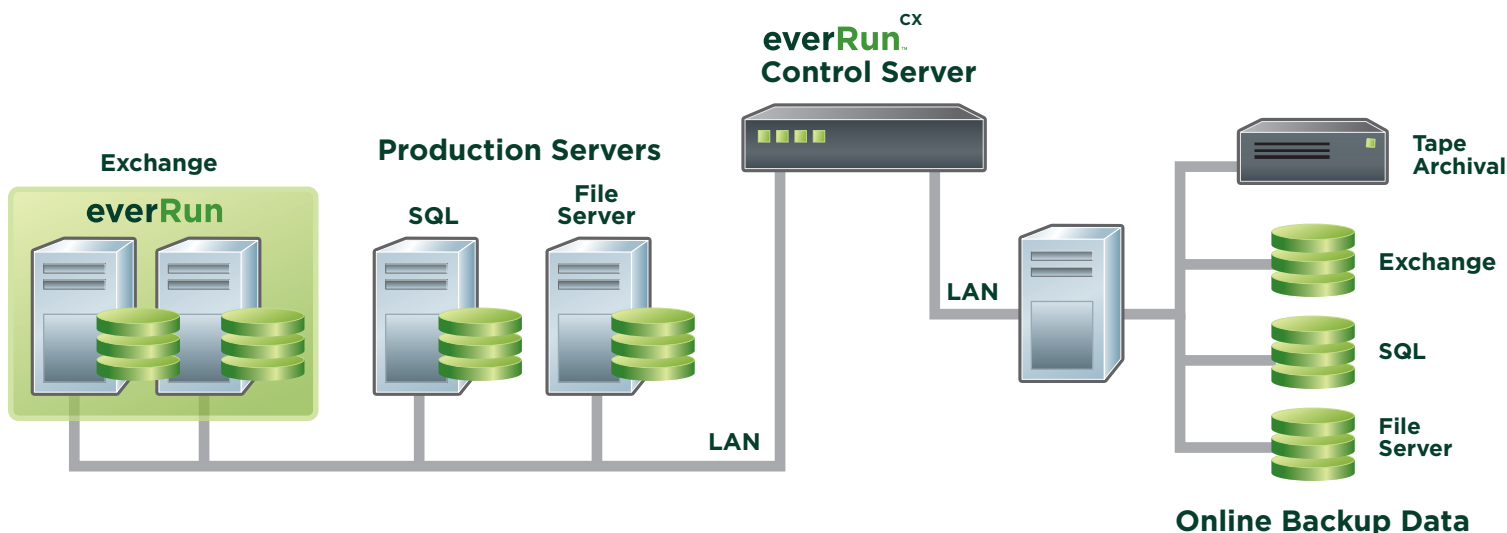
**WORDWIDE HEADQUARTERS**

Marathon Technologies Corporation  
 295 Foster Street, Littleton, MA 01460  
 Tel 1.800.884.6425/1.978.489.1100  
 Fax 1.978.489.1101  
 Email: [info@marathontechnologies.com](mailto:info@marathontechnologies.com)  
 Web: [www.marathontechnologies.com](http://www.marathontechnologies.com)

**EMEA HEADQUARTERS**

Marathon Technologies UK Ltd  
 Regus House, Trinity Court  
 Wokingham Road, Bracknell  
 Berkshire, RG42 1PL  
 Tel +44 (0) 1344.706.241  
 Fax +44 (0) 1344.706.242  
 Email: [emea@marathontechnologies.com](mailto:emea@marathontechnologies.com)  
 Web: [www.marathontechnologies.com](http://www.marathontechnologies.com)

**Local Data Protection**



The Marathon logo, SplitSite and Marathon everRun are trademarks or registered trademarks of Marathon Technologies Corporation. Microsoft and Windows are registered trademarks of Microsoft Corporation. All other trademarks and registered trademarks are the property of their respective owners. Copyright © 2008 Marathon Technologies Corporation. All rights reserved. Marathon Technologies Corporation reserves the right to make improvements to this document at any time and without further notice. Marathon Technologies Corporation assumes no responsibility for any errors that may appear in this document.